

NOZZLE INSTALLATION GUIDE

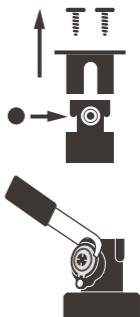
1" FULL CIRCLE GOLF ROTOR

MODELS: R-821-B, R-851-C, R-851-E, R-851-H

STEP 1: REMOVE DRIVE ASSEMBLY

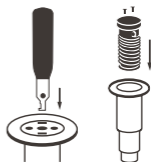
STEP 2: INSTALL NEW NOZZLE

- Remove screws (2) on top of nozzle cap.
- Pull off nozzle cap.
- Snap in correct nozzle. (see Performance Chart).
- To remove nozzle, pull out using snap ring tool or screwdriver.



STEP 3: INSTALL DRIVE ASSEMBLY

- Reinstall nozzle cap with screws (2).
- Install new snap ring under cap.
- Place assembly in body.
- Push assembly until flush.
- Using tool push down in snap ring slots (2) until it clicks in.



PERFORMANCE DATA

1" FULL CIRCLE GOLF ROTOR

MODELS: R-821-B, R-851-C, R-851-E, R-851-H

Nozzle	Pressure		Max. Radius*	Discharge	Precipitation Rate ¹	
	PSI	BAR			in/hr	mm/hr
8 Black	60	4.1	11.2	0.5	1.8	14.18
	70	4.8	11.2	0.6	2.3	18.13
	80	5.5	-	-	-	-
12 Gray	60	4.1	11.9	0.6	2.2	15.99
	70	4.8	11.9	0.7	2.6	18.58
	80	5.5	-	-	-	-
14 Yellow	60	4.1	14.3	0.9	3.1	15.35
	70	4.8	14.3	1.0	3.5	17.13
	80	5.5	-	-	-	-
16 Orange	60	4.1	15.5	1.1	3.8	15.97
	70	4.8	16.7	1.2	4.2	14.87
	80	5.5	-	-	-	-
18 Brown	60	4.1	16.1	1.2	4.5	17.32
	70	4.8	17.3	1.3	4.6	15.28
	80	5.5	-	-	-	-
19 Red	60	4.1	16.7	1.2	4.5	16.00
	70	4.8	16.7	1.3	4.8	17.14
	80	5.5	18.0	1.4	5.0	15.59
25 Blue	60	4.1	17.9	1.4	5.1	15.95
	70	4.8	20.4	1.7	6.0	14.56
	80	5.5	21.0	1.8	6.5	14.63
28 Green	60	4.1	18.8	1.8	6.4	17.90
	70	4.8	21.6	1.9	7.0	15.01
	80	5.5	21.9	2.0	7.4	15.28

¹ Precipitation rates for square and triangular spacing calculated at 50% of diameter for half-circle operation. Assumes zero wind for precipitation and radius. Adjust for local conditions.



Customer Service

405-938-5533 | customerservice@bearirrigation.com

99903375_rev1000