

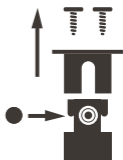
INSTALLATION PART CIRCLE ADJUSTMENT GUIDE

INS-R-47DR

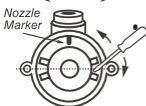
REPLACES: Rain Bird® 47D and 51D Series Impact Drives

STEP 1: INSTALL NEW NOZZLE

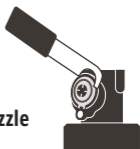
- Remove screws (2) on top of nozzle cap.
- Pull off nozzle cap.
- Snap in correct nozzle. (see Performance Chart).
- To remove nozzle, pull out using snap ring tool or screwdriver.



STEP 2: ADJUSTABLE PART CIRCLE OPTION



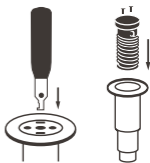
- Rotate EASY ARC TABS to desired arc.
- Using a small screw driver or pointed object, move right and left tabs on each side of the Nozzle Marker. Example 180°
- Replace EASY ARC cap.



NOTE: For part circle operation, make sure nozzle faces area to be irrigated.

STEP 3: INSTALL DRIVE ASSEMBLY

- Reinstall cap with screws (2).
- Install new snap ring under cap.
- Place assembly in body.
- Push assembly until flush.
- Using tool push down in snap ring slots (2) until click in.



PERFORMANCE DATA
INS-R-47DR

Nozzle		Base Pressure (PSI)						Rain Bird Nozzle Reference	
		50	60	70	80	90	100	47D	51D
14 Orange	Radius	52	55	57	61	61	61	16	
	GPM	12.5	13.5	15.0	17.0	18.0	19.0		
16 Brown	Radius	55	58	60	62	62	62	*	16
	GPM	17.0	18.5	20.0	22.0	23.5	24.0		
18 Blue	Radius	60	62	65	66	67	67	*	18
	GPM	22.0	23.5	25.0	26.0	27.0	28.5		
20 Red	Radius	64	66	67	68	70	70	*	20
	GPM	24.5	26.0	27.5	29.0	31.5	33		

Shaded area represents pressure not recommended for optimal nozzle performance.

*Bear nozzles (03, 04, 07) can be used on 47D to increase radius.